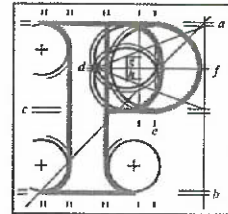


Our Case Number: ABP-314724-22

Planning Authority Reference Number:



**An
Bord
Pleanála**

Upper Leeson Street Area Residents Association
PO Box 8411 Ballsbridge
Dublin 4

Date: 07 December 2022

Re: Railway (Metrolink - Estuary to Charlemont via Dublin Airport) Order [2022]
Metrolink. Estuary through Swords, Dublin Airport, Ballymun, Glasnevin and City Centre to
Charlemont, Co. Dublin

Dear Sir / Madam,

An Bord Pleanála has received your recent submission (including your fee of €50) in relation to the above-mentioned proposed Railway Order and will take it into consideration in its determination of the matter.

The Board will revert to you in due course with regard to the matter.

Please be advised that copies of all submissions/observations received in relation to the application will be made available for public inspection at the offices of the relevant County Council(s) and at the offices of An Bord Pleanála when they have been processed by the Board.

More detailed information in relation to strategic infrastructure development can be viewed on the Board's website: www.pleanala.ie.

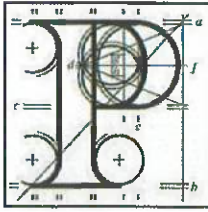
If you have any queries in the meantime, please contact the undersigned. Please quote the above mentioned An Bord Pleanála reference number in any correspondence or telephone contact with the Board.

Yours faithfully,

Niamh Thornton
Executive Officer
Direct Line: 01-8737247

Tel	Tel	(01) 858 8100
Glaao Áitiúil	LoCall	1890 275 175
Facs	Fax	(01) 872 2684
Láithreán Gréasáin	Website	www.pleanala.ie
Ríomhphost	Email	bord@pleanala.ie

64 Sráid Maoilbhríde	64 Marlborough Street
Baile Átha Cliath 1	Dublin 1
D01 V902	D01 V902



Observation on a Strategic Infrastructure Development Application

Observer's details

1. Observer's details (person making the observation)

If you are making the observation, write your full name and address.

If you are an agent completing the observation for someone else, write the observer's details:

(a) Observer's name

Upper Leeson Street Area Residents' Association
(ULSARA)

(b) Observer's postal address

PO Box 8411 Ballsbridge Dublin 4

Agent's details

2. Agent's details (if applicable)

If you are an agent and are acting for someone else **on this observation**, please **also** write your details below.

If you are not using an agent, please write "Not applicable" below.

(a) Agent's name

Not Applicable

(b) Agent's postal address

Postal address for letters

3. During the process to decide the application, we will post information and items to you or to your agent. For this **current application**, who should we write to? (Please tick ✓ one box only)

You (the observer) at the postal address in Part 1

☐

The agent at the postal address in Part 2

☒

Details about the proposed development

4. Please provide details about the **current application** you wish to make an observation.

- (a) **An Bord Pleanála case number for the current application (if available)**
(for example: 300000)

314724

- (b) **Name or description of proposed development**

Railway (MetroLink–Estuary to Charlemont via Dublin Airport) Order [2022]”

- (c) **Location of proposed development**

(for example: 1 Main Street, Baile Fearainn, Co Abhaile)

Dublin

Observation details

5. Grounds

Please describe the grounds of your observation (planning reasons and arguments). You can type or write them in the space below. There is **no word limit** as the box expands to fit what you write.

You can also insert photographs or images in this box. (See part 6 – Supporting materials for more information).

ULSARA (The Upper Leeson Street Area Residents' Association) supports the development of public infrastructure mass transport initiatives that improve the amenity of our area and the wider Dublin city while protecting the built environment and communities of the city.

We note the plans for a Metrolink station at Charlemont. While recognising the convenience of this proposed station for residents throughout the area, we are also acutely alert to the concerns of many residents in the immediate vicinity of the station and share their concerns that unregulated or poorly regulated surface transport delivering intending travellers to; and awaiting/collecting passengers from; the metro station could impact negatively on the quality of life for those in the immediate neighbourhood.

Given the fact that Charlemont may be for many years the most southerly end station on the route, the local area faces unique problems not confronting other stations. It will represent a potentially attractive "kiss and ride" location for family members to drop intending passengers from a wide area of South Dublin. It will also be identified as an attractive rendezvous location for those arranging taxi or private car collection to complete their Metro journeys from, for example, Dublin Airport.

As a result, impeded access to the various lane ways in the neighbourhood, abuse of parking spaces allocated to drivers with disabilities, illegal parking on double yellow lines (including at junctions), obstruction of cycle lanes and blocking of access to private dwellings can all be predicted. This must not be a result of the opening of the station.

To avoid these outcomes we strongly recommend that An Bord Pleanála should require the project promoter and Dublin City Council to agree, implement and enforce a rigorous surface transportation management plan specific to the Charlemont area which anticipates and effectively enforces prohibition of illegal parking and other rule breaking by motorists (including PSV license holders). This will undoubtedly require an agile approach - probably including sustained on-foot patrolling by authorised enforcement personnel. We believe it is essential that an adequate budget for this sustained enforcement programme is part of the area surface transport management plan.

We further recommend that it be a requirement that representatives of the local community are consulted in an ongoing and structured way on the development and implementation of the plan.

5. Grounds

Simon Nugent, committee member
For and on behalf of the ULSARA Committee

Supporting materials

6. If you wish, you can include supporting materials with your observation.

Supporting materials include:

- photographs,
- plans,
- surveys,
- drawings,
- digital videos or DVDs,
- technical guidance, or
- other supporting materials.

You can insert photographs and similar items in your observation details: grounds (part 5 of this form).

If your supporting materials are physical objects, you must send them together with your observation by post or deliver it in person to our office. You cannot use the online uploader facility.

Fee

7. You **must** make sure that the correct fee is included with your observation.

Observers (except prescribed bodies)

- strategic infrastructure observation is €50.
- there is no fee for an oral hearing request

Oral hearing request

8. If you wish to [request the Board to hold an oral hearing](#), please tick the “Yes, I wish to request an oral hearing” box below.

You can find information on how to make this request on [our website](#) or by contacting us.

If you do not wish to request an oral hearing, please tick the “No, I do not wish to request an oral hearing” box.

Yes, I wish to request an oral hearing

☐

No, I do not wish to request an oral hearing

☐ No

Final steps before you send us your observations

9. If you are sending us your observation using **the online uploader facility**, remember to save this document as a Microsoft word or PDF and title it with:

- the case number and your name, or
- the name and location of the development and your name.

This also applies to prescribed bodies sending an observation by email.

If you are sending your observation to us by post or delivering in person, remember to print off all the pages of this document and send it to us.

For Office Use Only

FEM – Received		SIDS – Processed	
Initials		Initials	
Date		Date	

Notes

